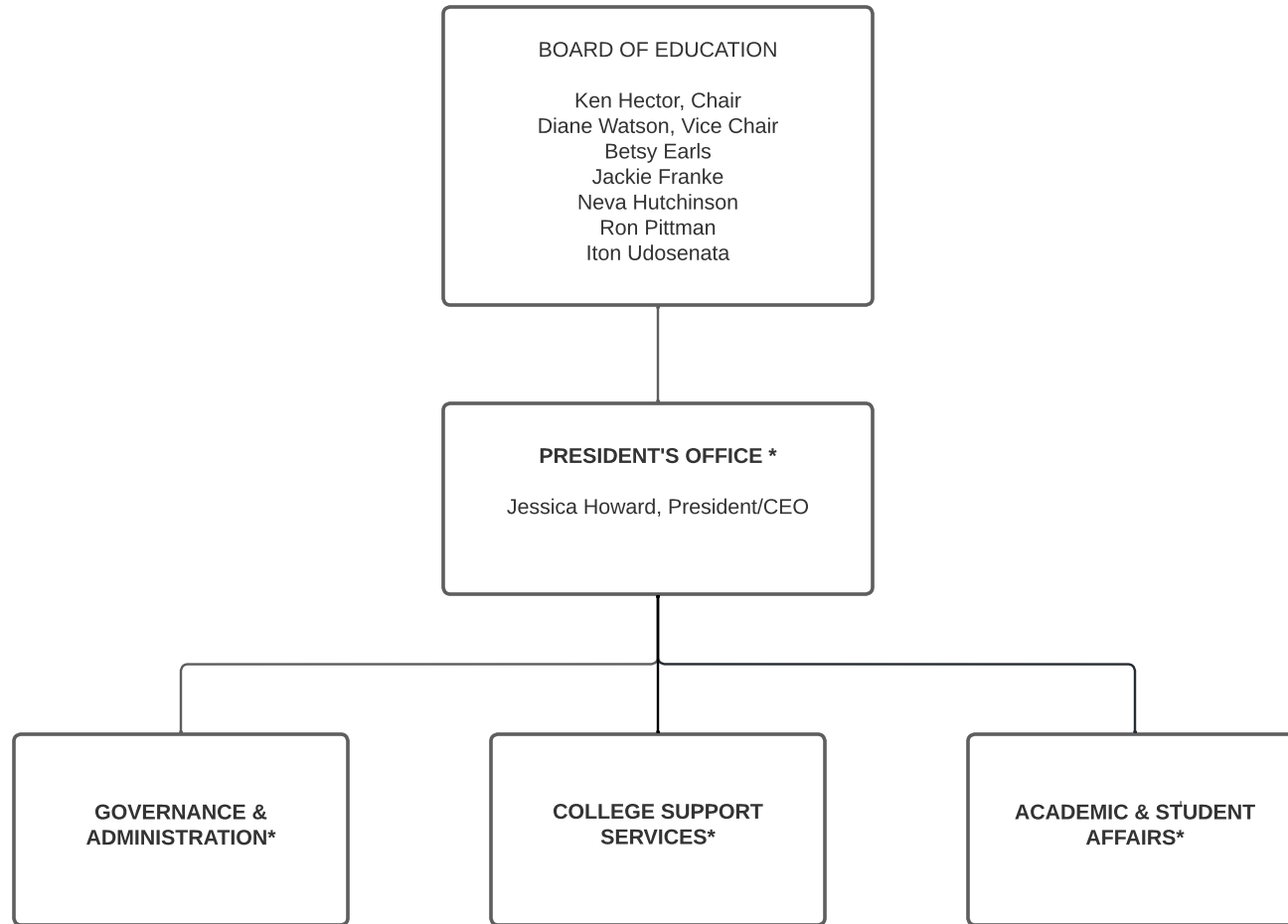
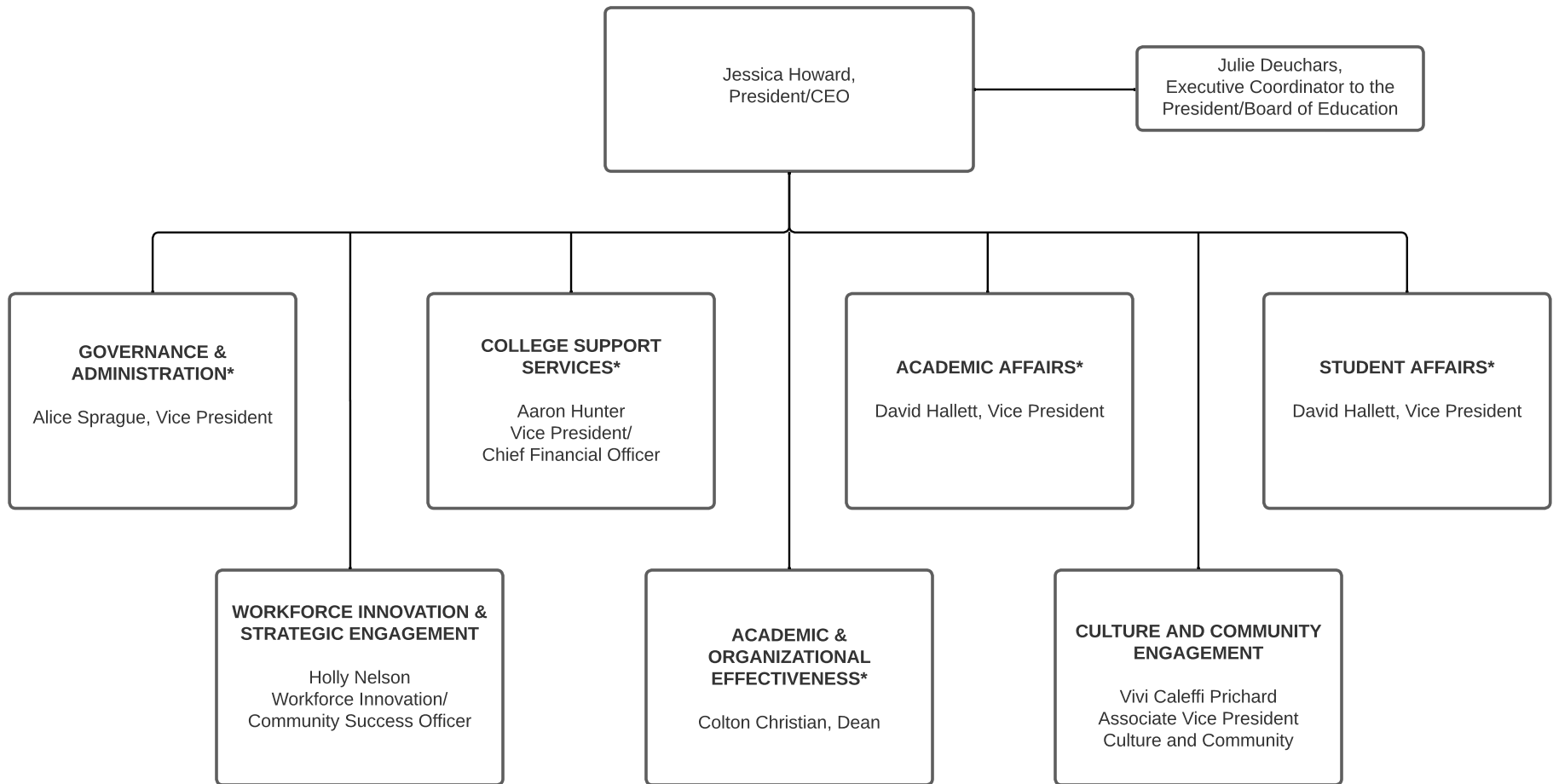


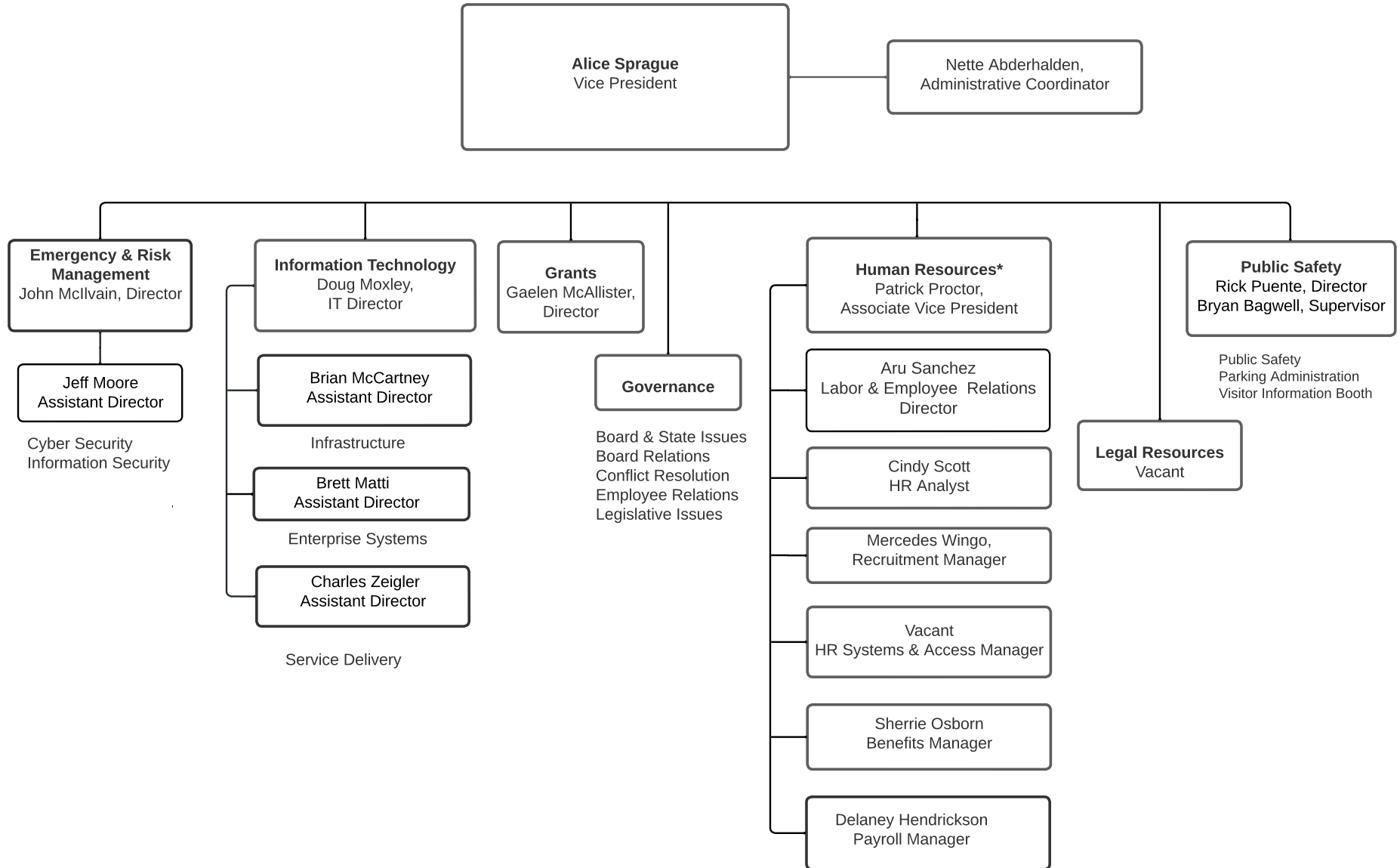
CHEMEKETA COMMUNITY COLLEGE



PRESIDENT'S OFFICE

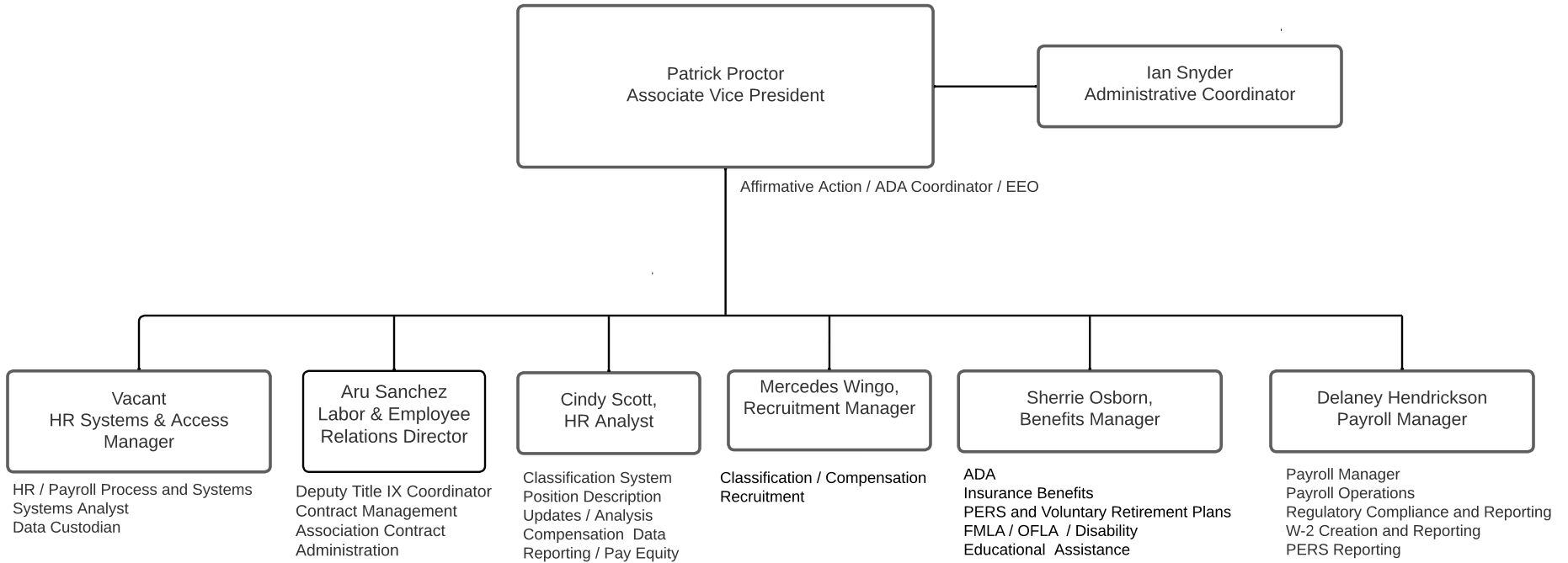


GOVERNANCE & ADMINISTRATION



*more detailed charts follow

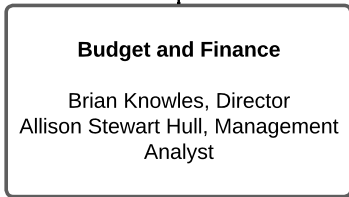
HUMAN RESOURCES



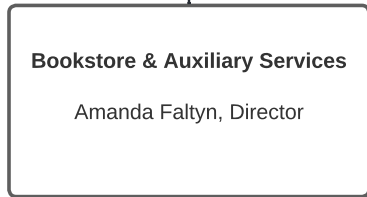
COLLEGE SUPPORT SERVICES



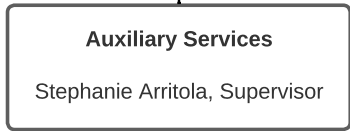
Capital Projects/Facilities Planning
Facilities & Maintenance
Development
Sustainability
Transportation



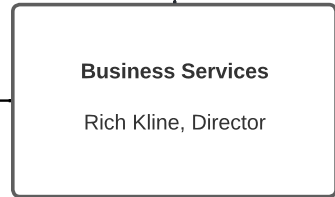
Budget & Position Control
Cash Management
College Infrastructure
Financial Analysis
Investments



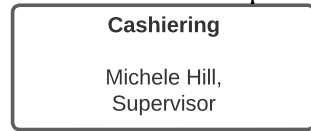
Bookstore



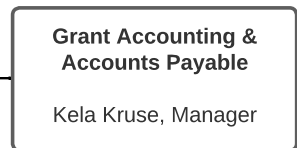
Copy Center
Mail Services
Shipping & Receiving



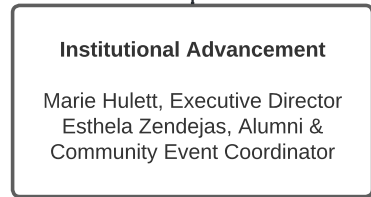
Accounting & Audit
Accounts Receivable
Procurement Services



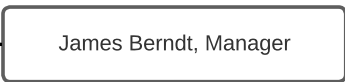
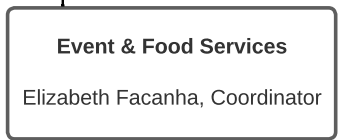
Cashiering
Student Accounts
Enrollment Center Co-Coordination



Accounts Payable
Grant Accounting
Procurement Care
Administration



Foundation
Marketing
Public Relations



Custodial Services

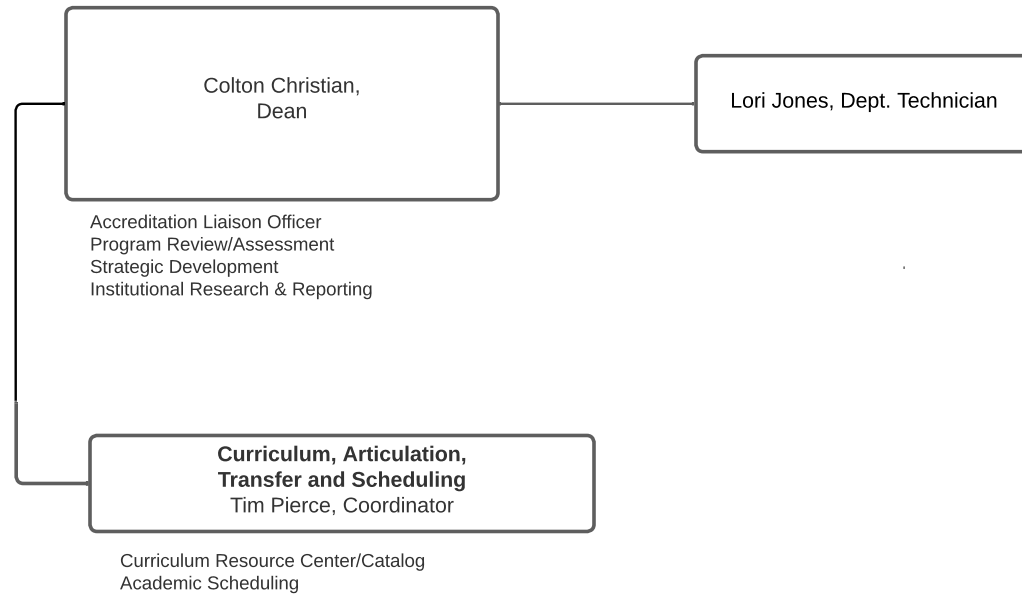


Grounds

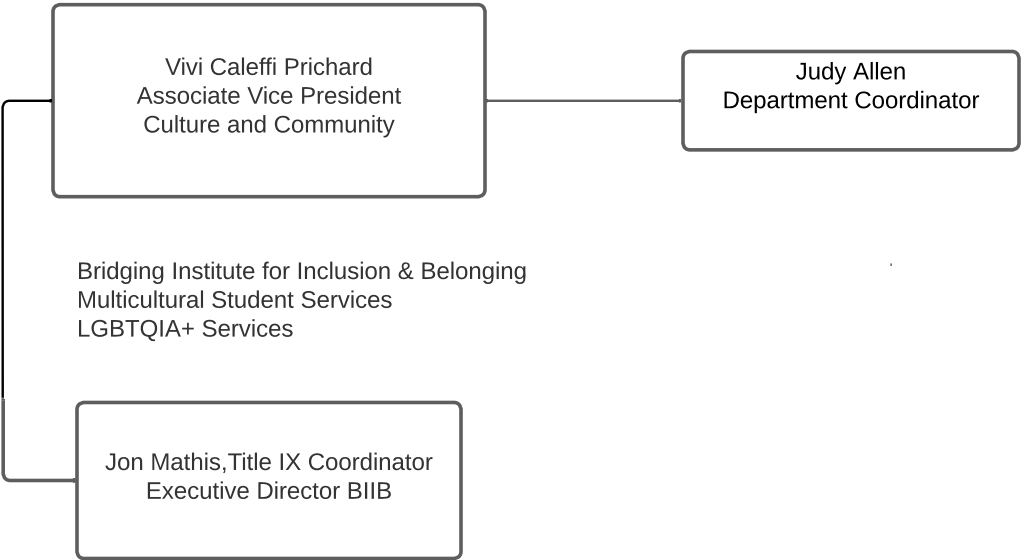


Construction Project Management
Plans & Archiving

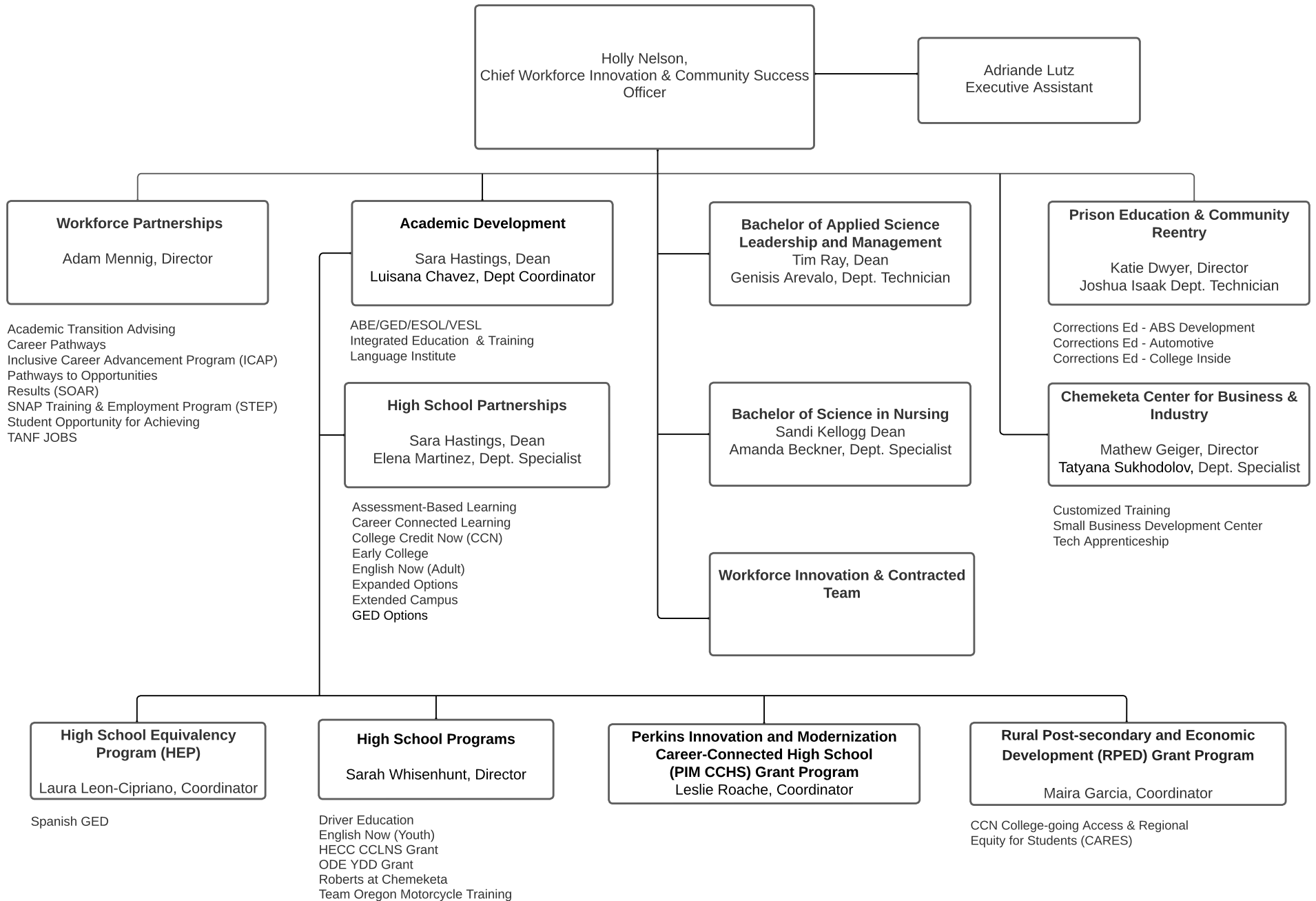
ACADEMIC & ORGANIZATIONAL EFFECTIVENESS



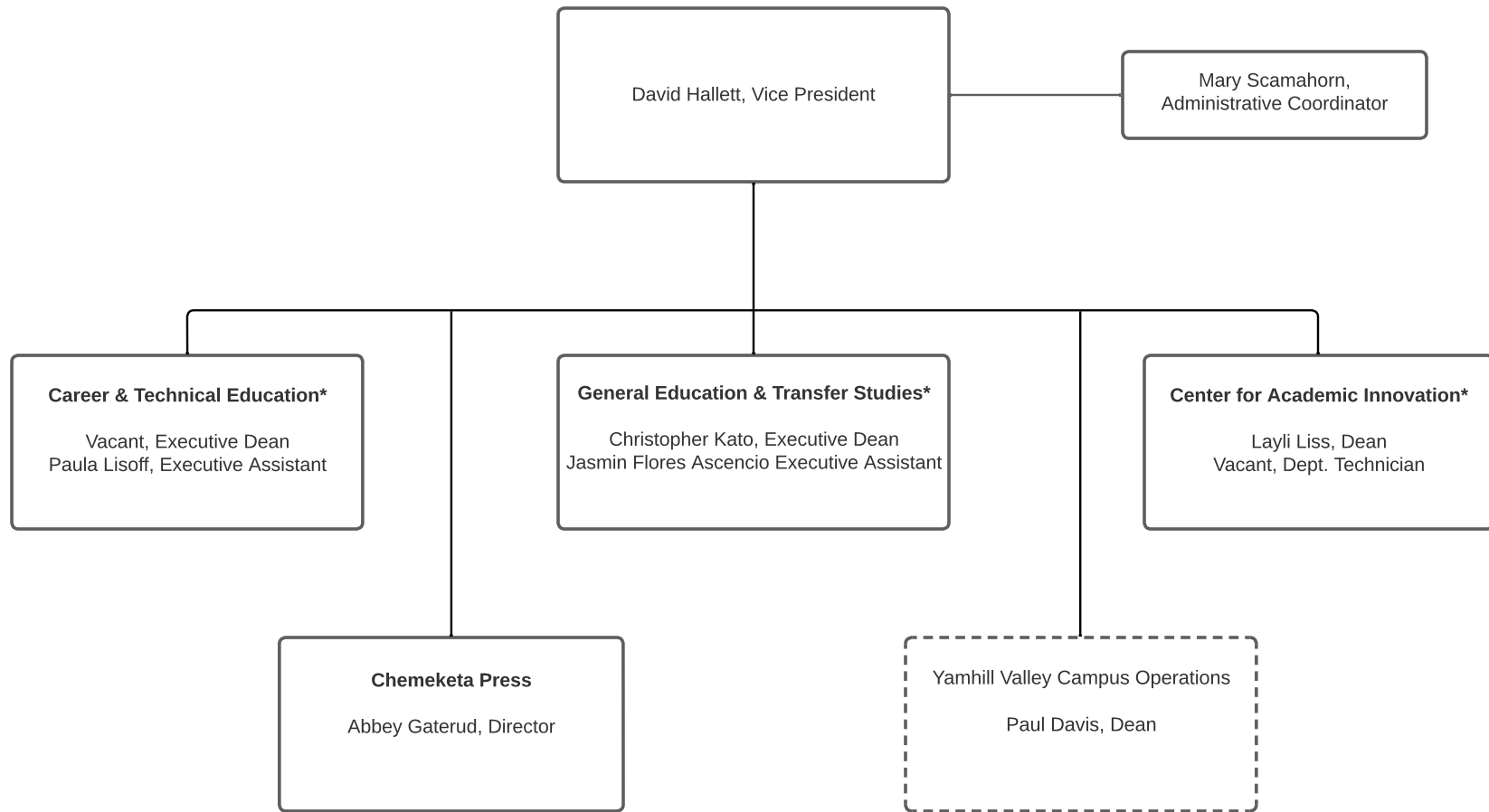
CULTURE AND COMMUNITY ENGAGEMENT



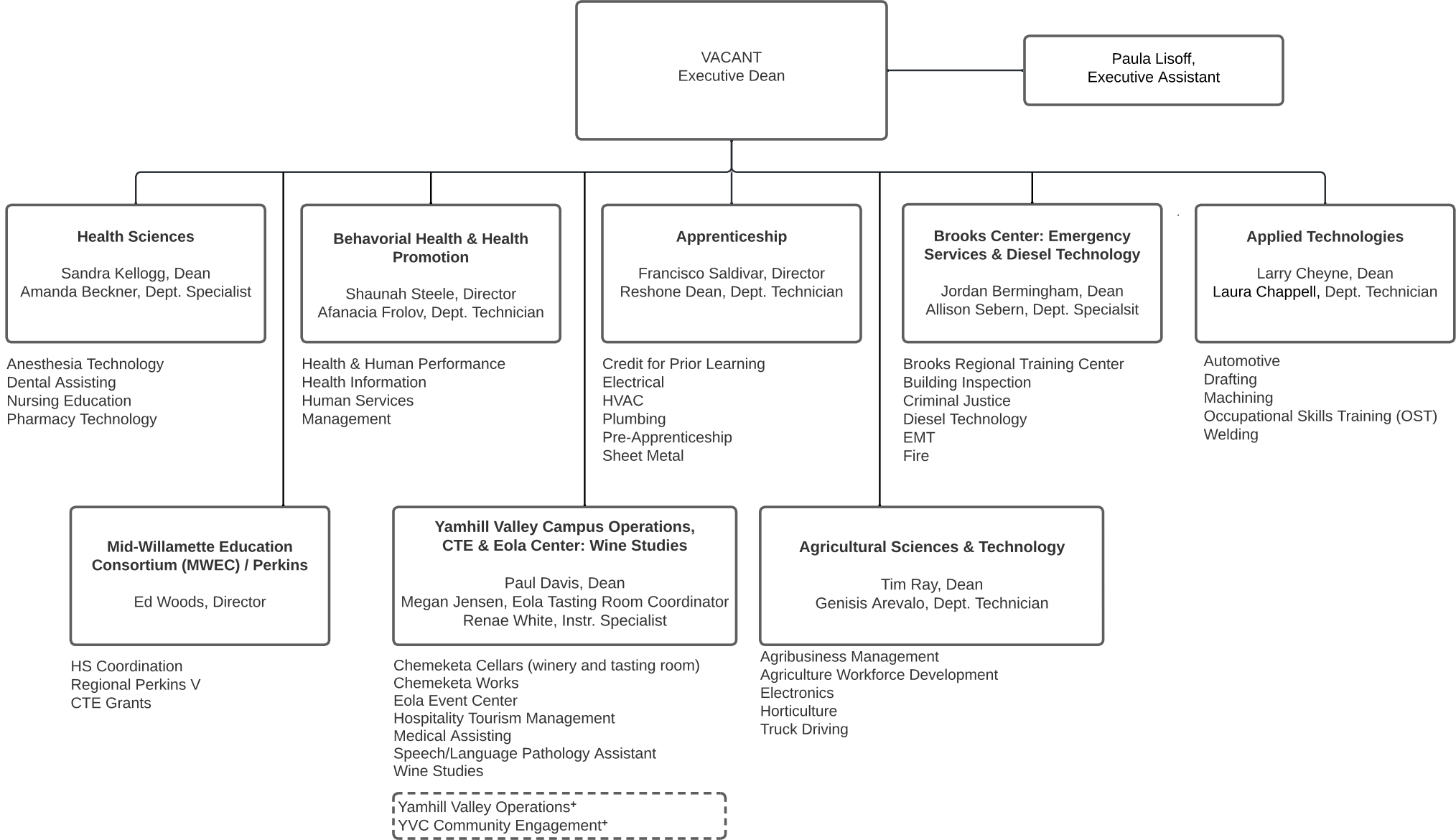
Workforce Innovation & Strategic Engagement



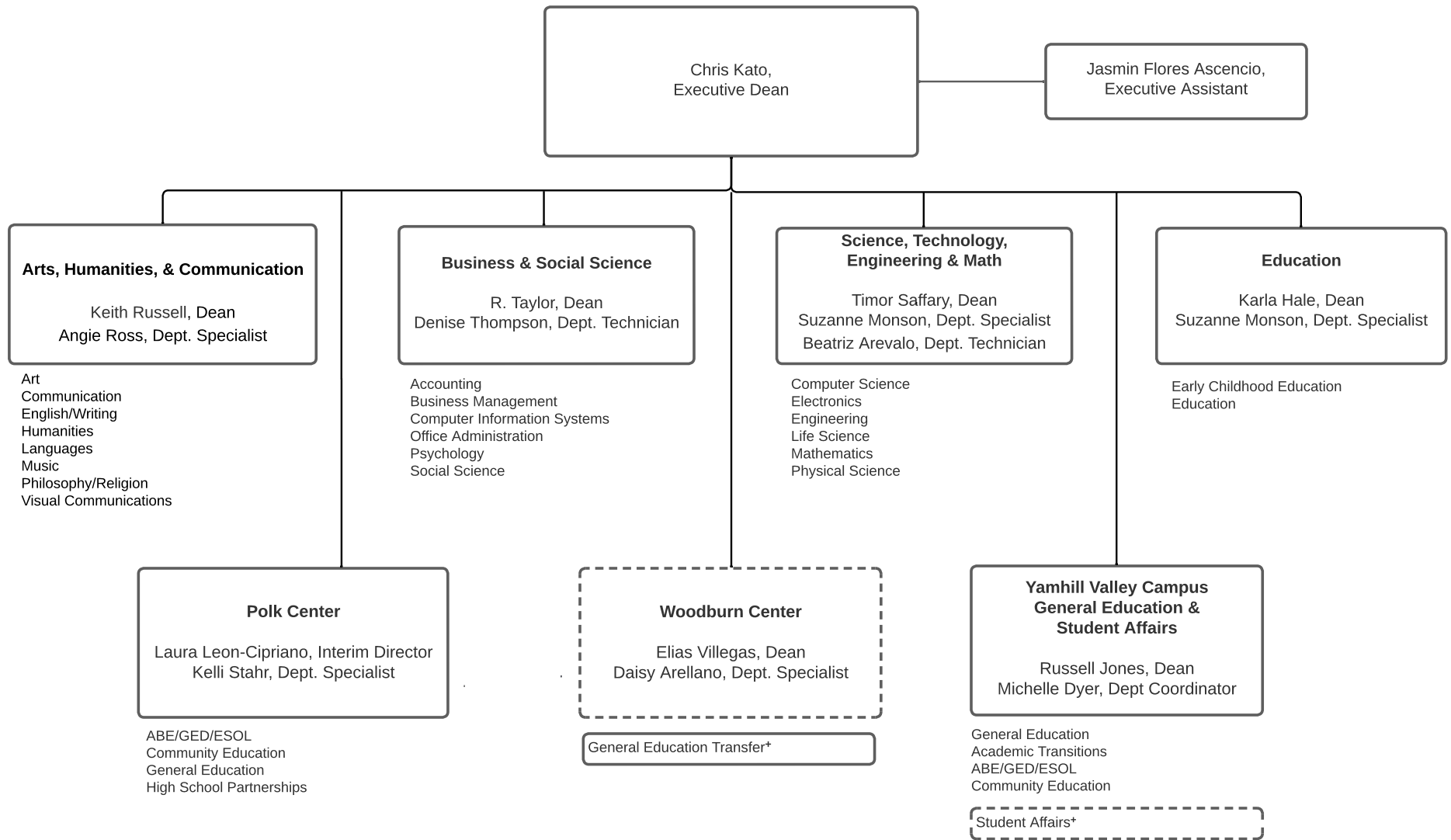
ACADEMIC AFFAIRS



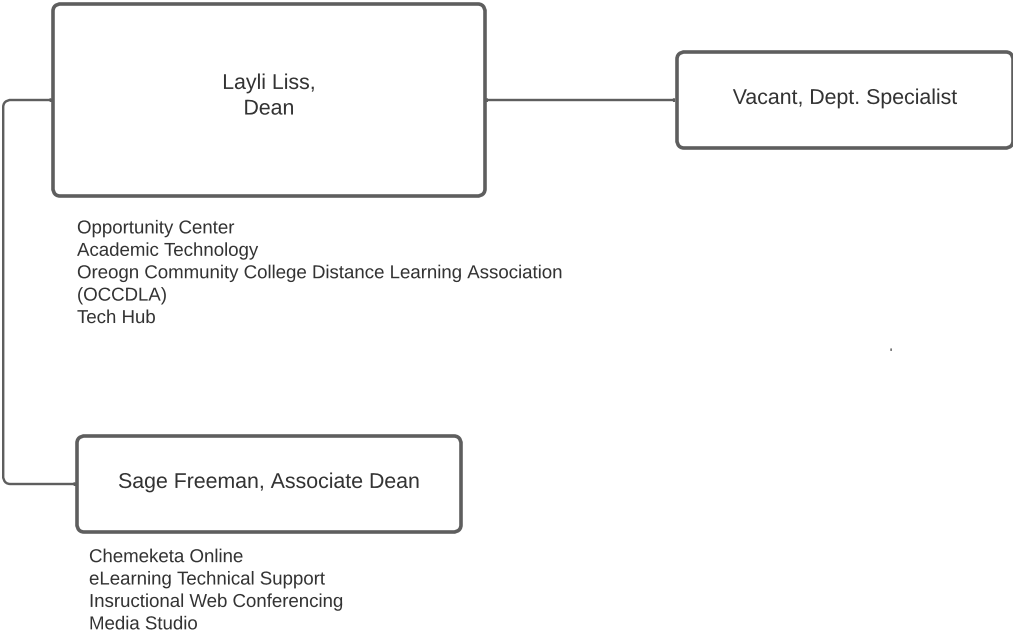
CAREER & TECHNICAL EDUCATION



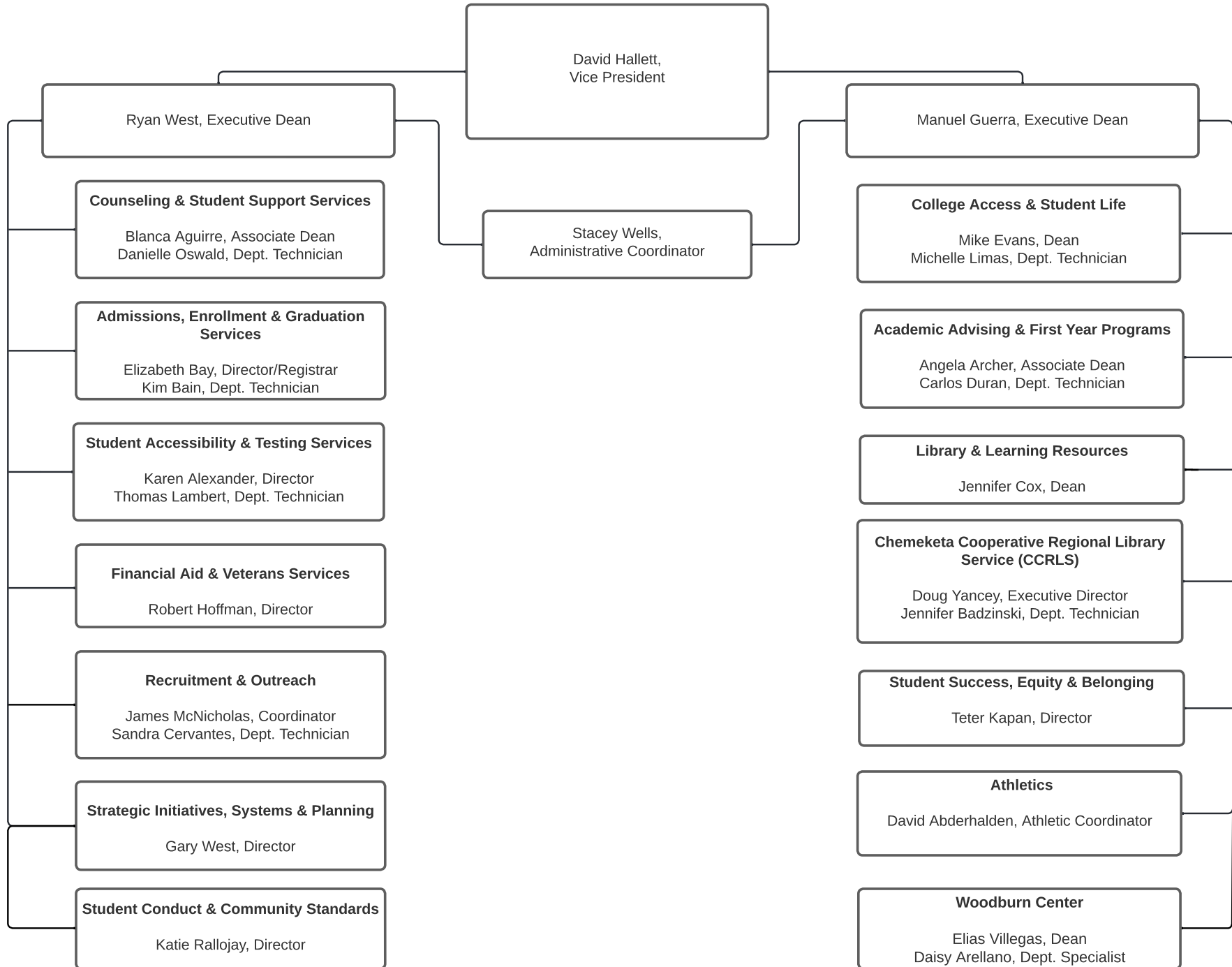
GENERAL EDUCATION & TRANSFER STUDIES



CENTER FOR ACADEMIC INNOVATION

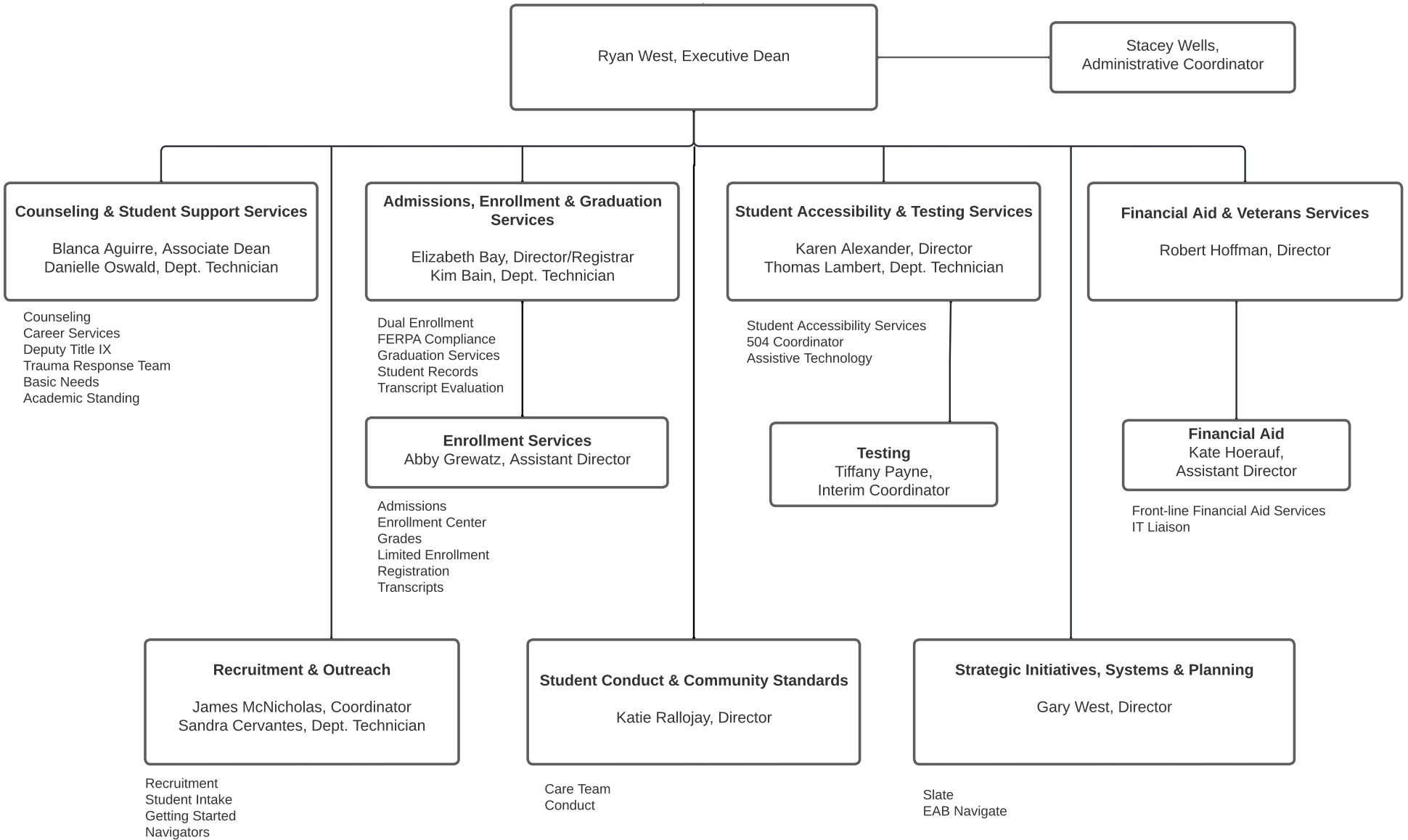


STUDENT AFFAIRS*

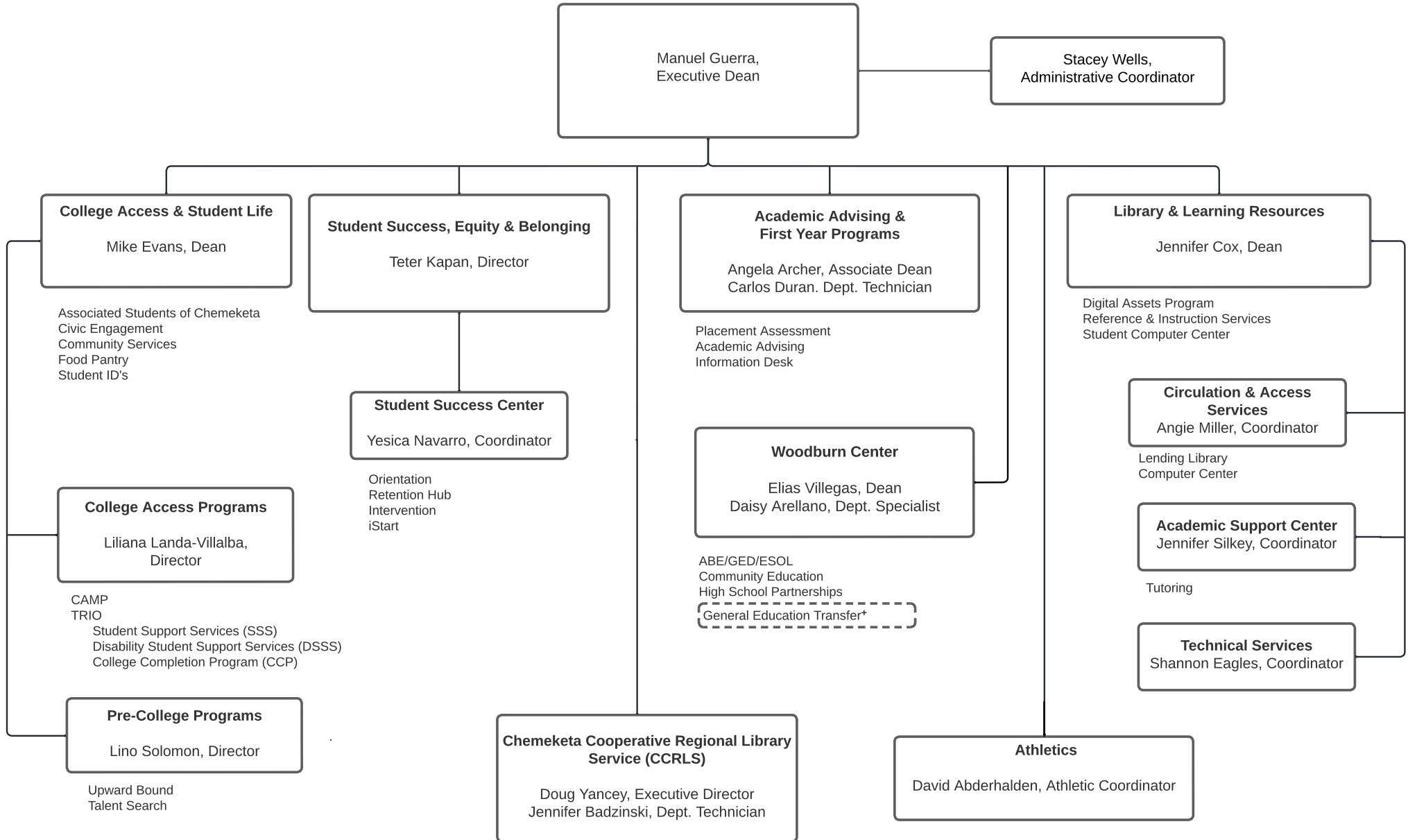


*more detailed charts follow

STUDENT AFFAIRS



STUDENT AFFAIRS



+ works directly with General Education & Transfer Studies

Winter 2025